

# SimPad with Session Viewer or SimView Mobile

## Quick Setup Guide





Introduction	4
Start Session Viewer	5
Connect Patient Monitor to SimLink Network	7
Connect SimPad to Session Viewer	11
Start a Simulation	12
Review in Session Viewer	13
Additional Information	15

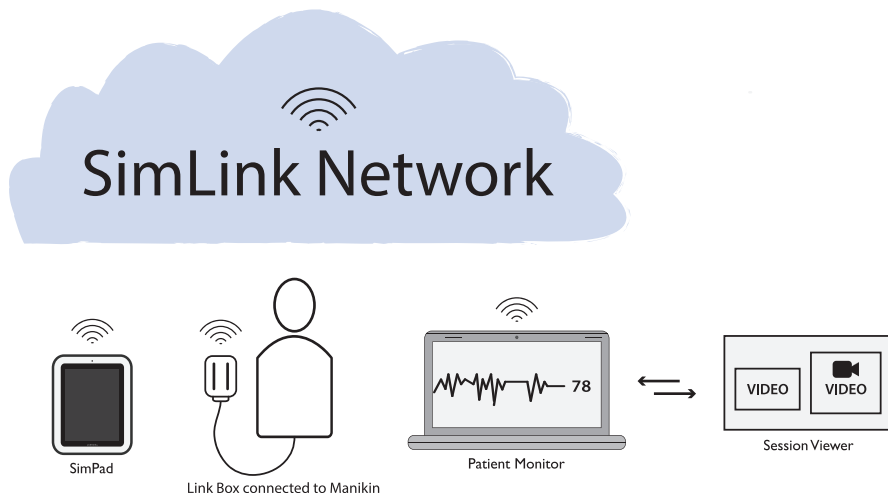
# 1

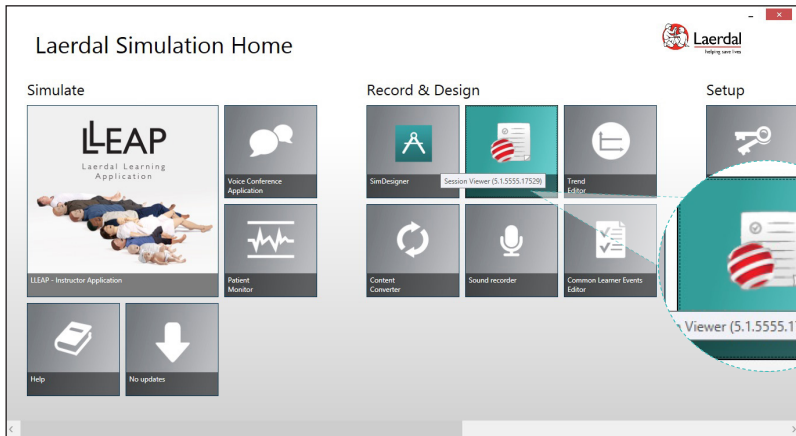
## Introduction

This Quick Setup Guide shows how to set up Patient Monitor and Session Viewer on a single computer. Setup will be similar if setting these up as separate devices, or when using SimView Mobile.

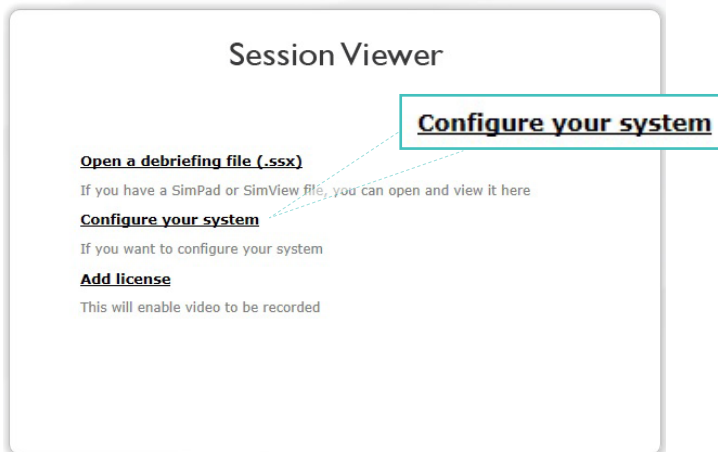
Ensure the SimPad and Link Box are turned on, connected to each other and on the same network. For more information on connecting SimPad to Link Box, refer to SimPad User Guide.

Using the SimLink network is recommended for this process.





From Laerdal Simulation Home, start Session Viewer:



Click 'Configure Your System'. Ensure that screen recording is activated, as well as video from the computer's camera.

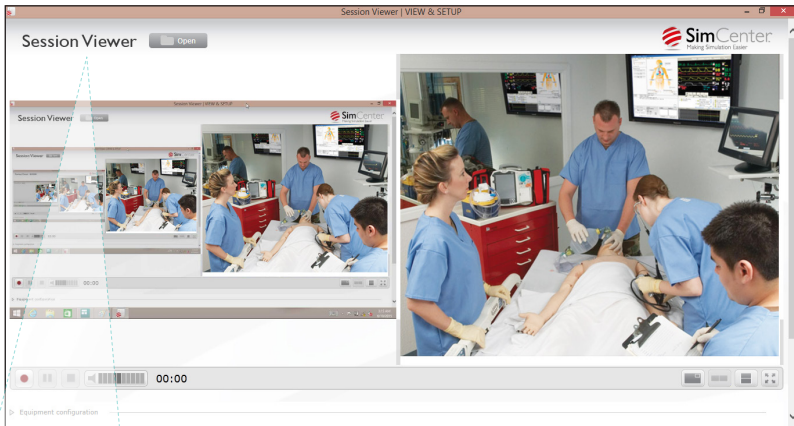


Note

When Session Viewer opens, check that both the screen recording and video are visible.

# 2

## Start Session Viewer



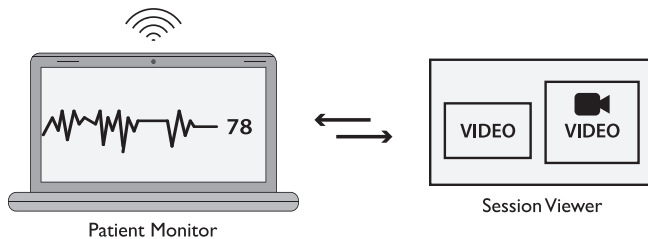
**Session Viewer**

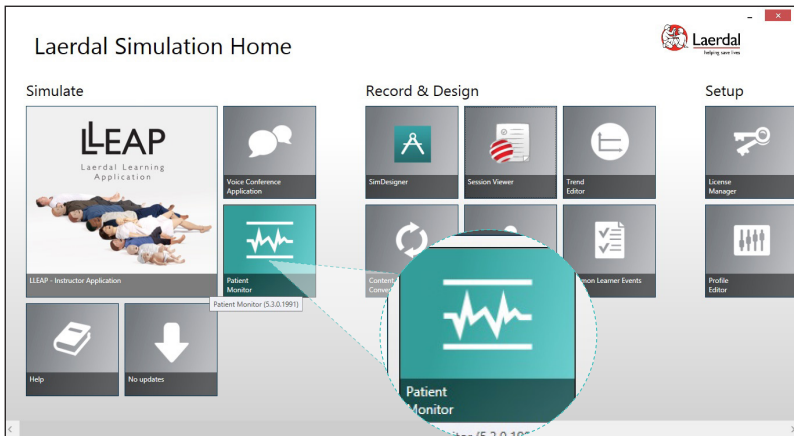
Click 'Session Viewer' to return to the main screen.  
Do not quit Session Viewer.



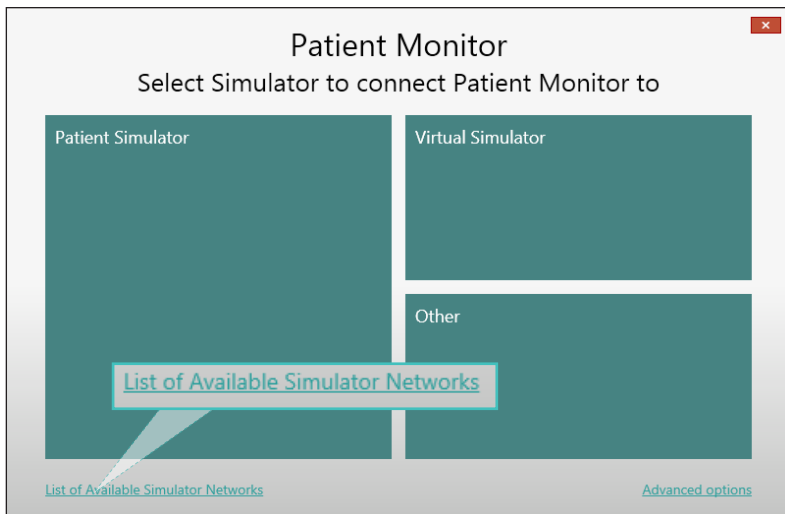
**Note**

For more information on configuring Session Viewer, connecting web cams and activating screen recording, refer to Session Viewer User Guide.





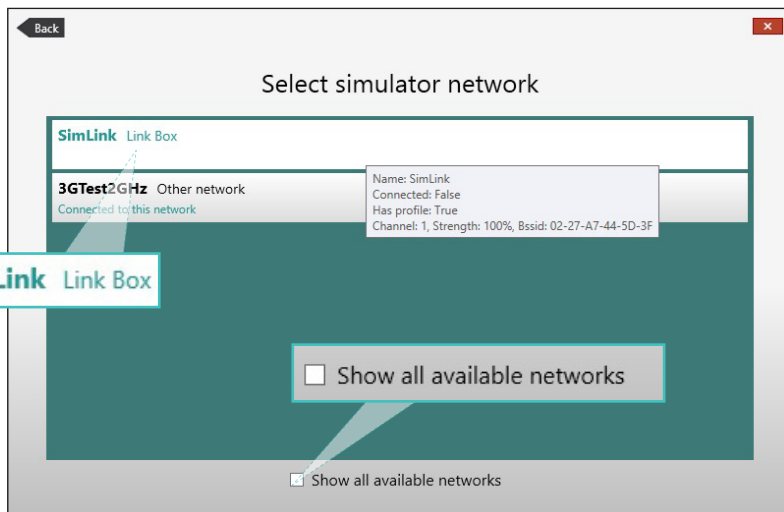
Once Session Viewer is set up, connect the computer to the network that SimPad and Link Box are on. Return to Laerdal Simulation Home and open Patient Monitor.



Click 'List of Available Simulator Networks'. Select your network from the list.

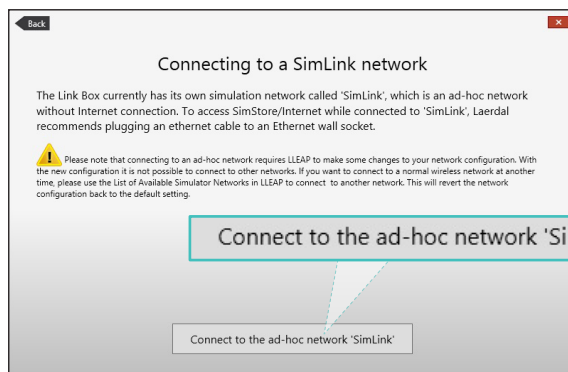
### 3

## Connect Patient Monitor to SimLink Network



#### Note

You must use this screen to switch between networks. When you want to connect to a non-simulator network, click 'Show all available networks' and select the network from the list.

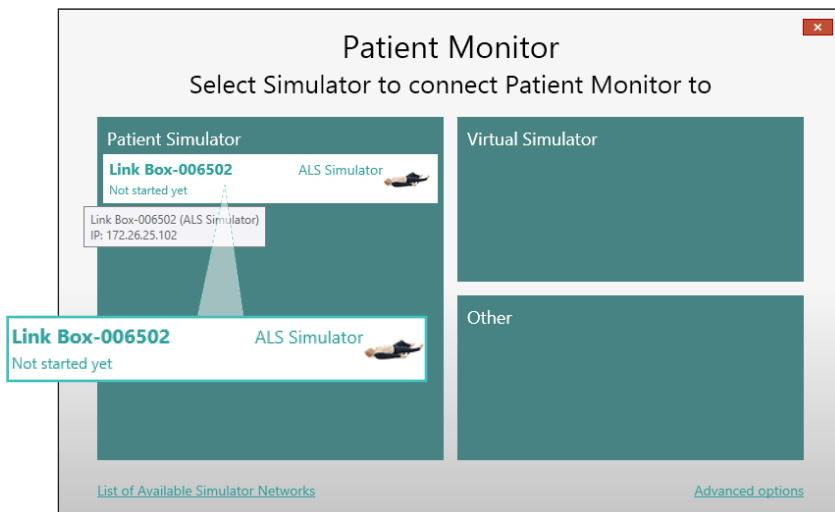


#### Note

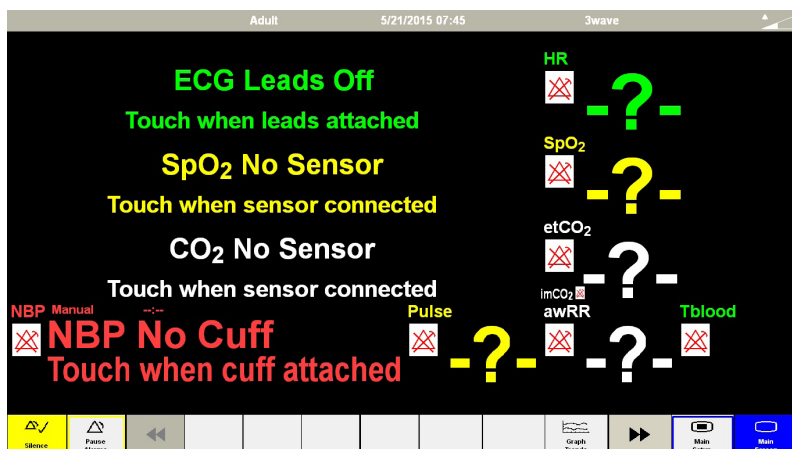
Before connecting, Laerdal Simulation Home will change network settings on your computer. When the warning dialogue pops up, allow changes by clicking 'Yes.'

Using the network settings in Microsoft Windows might cause issues when switching back to a Simulator Network.





After configuration is complete, select the Link Box from the Patient Simulator list. Check that the serial number matches the one on your Link Box.



Once connected to the Link Box, the Patient Monitor will be displayed.

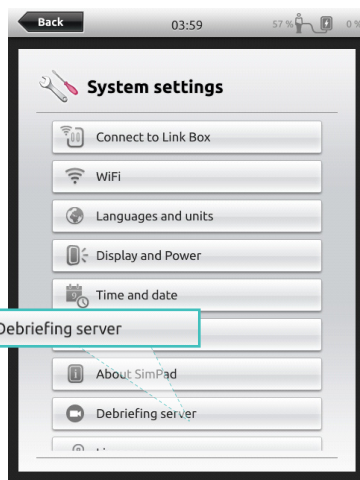
Patient Monitor is now connected to the SimLink network.

# 3

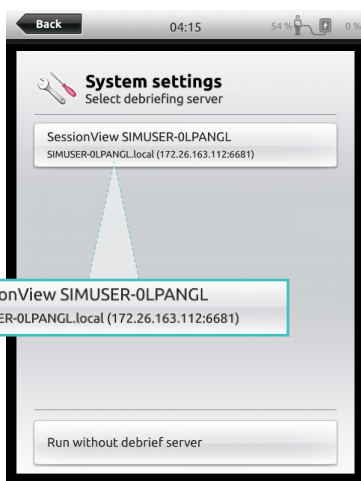
## Connect Patient Monitor to SimLink Network



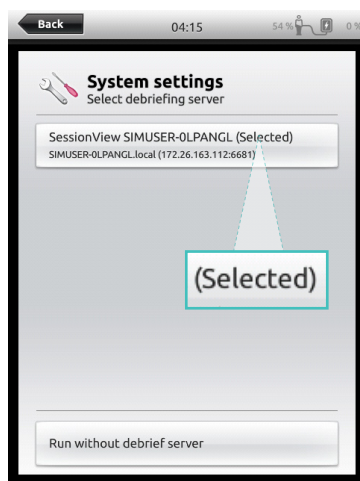
Go to System Settings on SimPad.



Then select 'Debriefing Server'



Select Session Viewer from the list.



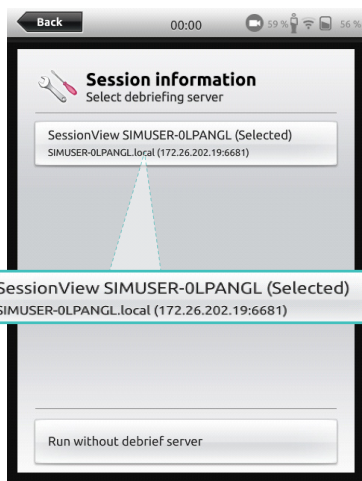
Session Viewer will show that it is selected. Then go back to menu.



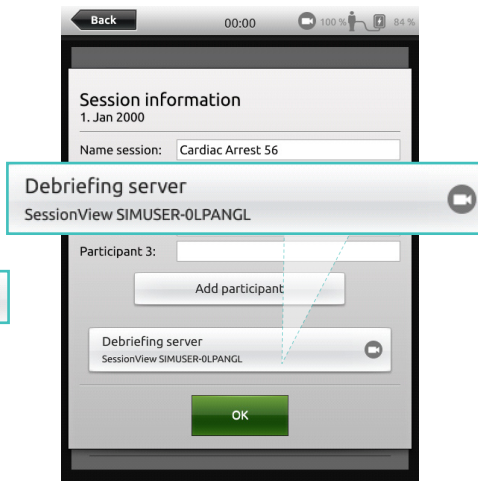
If no Debriefing Server is connected, or you wish to connect to another server; tap 'Debriefing Server' and select the correct server from the list.

# 5

## Start a Simulation



The name of the selected server will appear. Tap 'back'.

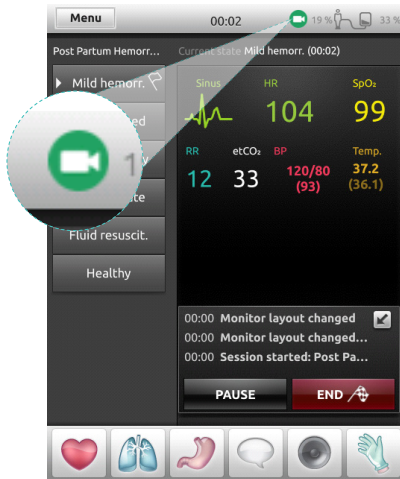


Your chosen Session Viewer will appear as the Debriefing Server. Tap 'OK'.

SimPad is now connected to Session Viewer

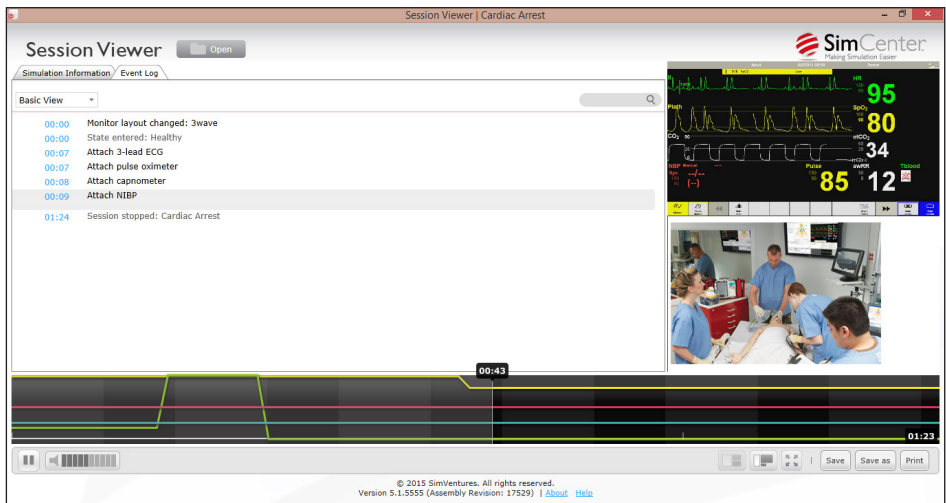
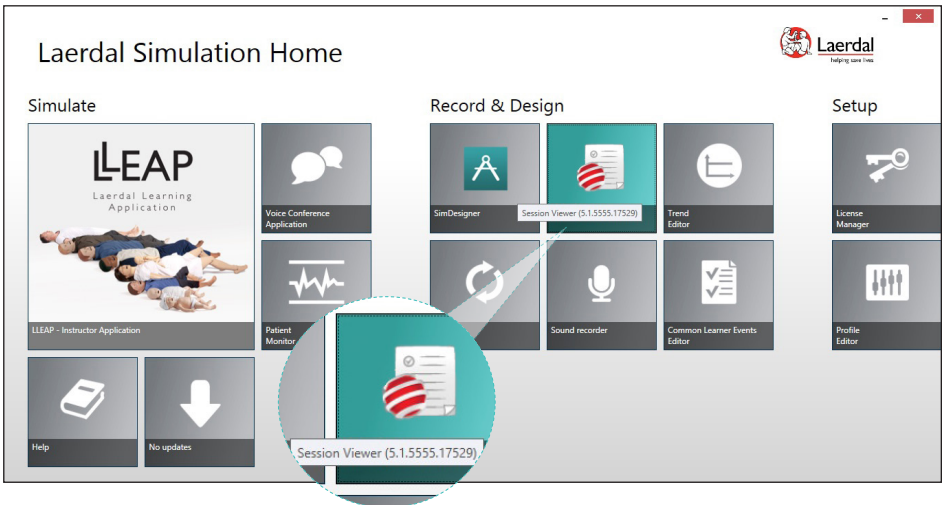


Tap "Start" to start your simulation session.



The SimView icon will turn green to show it is recording.

When you are finished with a simulation you can review in Session Viewer.  
Once the simulation stops, session viewer will appear , press stop which opens up automatically on your screen.

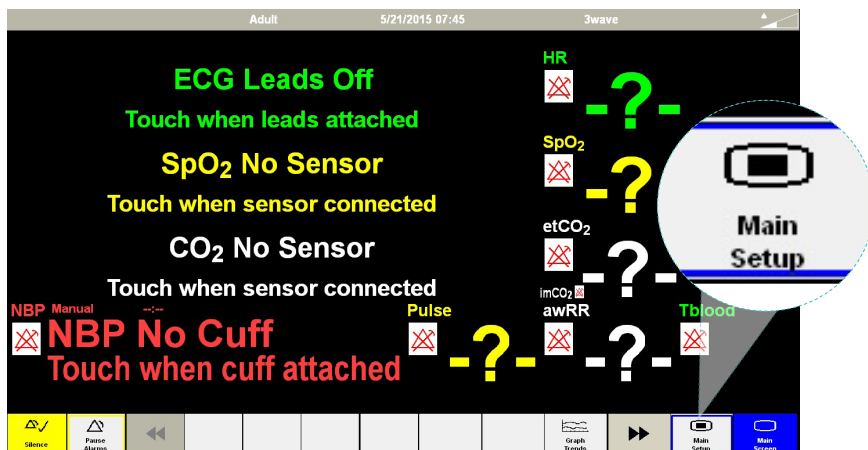


This is an example of a debriefing screen in Session Viewer, showing video feed from the camera and screen recording from your computer.

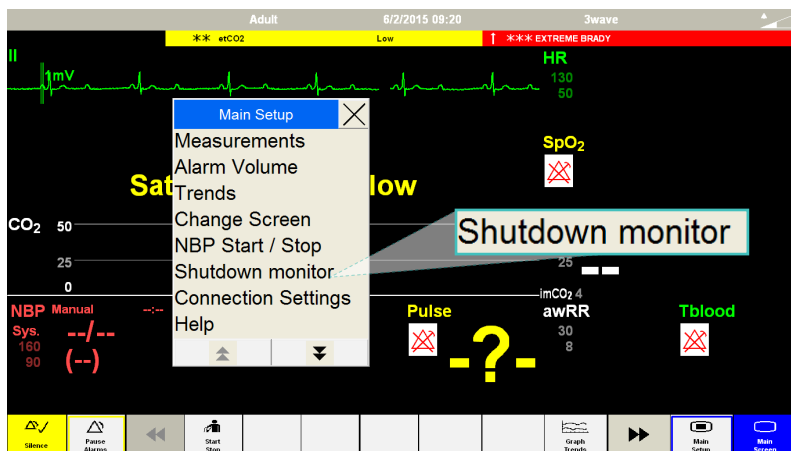
# 6

## Review in Session Viewer

To switch to Session Viewer, hold down alt+tab on your keyboard (Windows PC).  
Alternatively, close Patient Monitor from the Main Setup Menu.

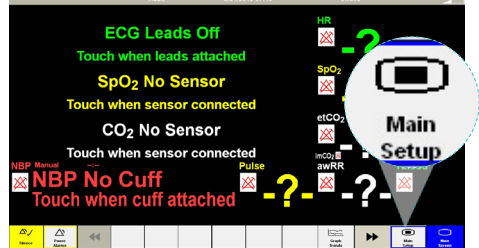


Click 'Shutdown Monitor' to close Patient Monitor

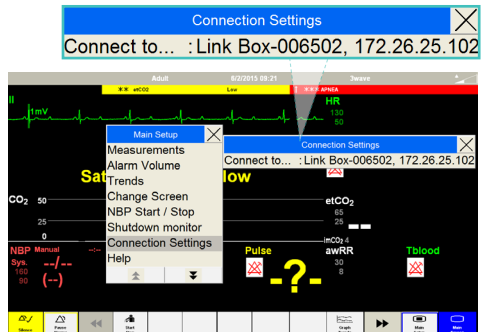


## Using other networks

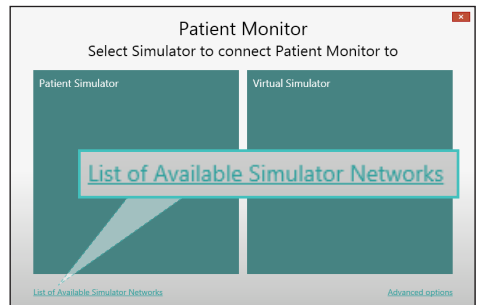
To disconnect from the simulation network or switch to a regular network, select Main Setup Menu from the Patient Monitor screen.



Click 'List of Available Simulator Networks'. Select your network from the list.

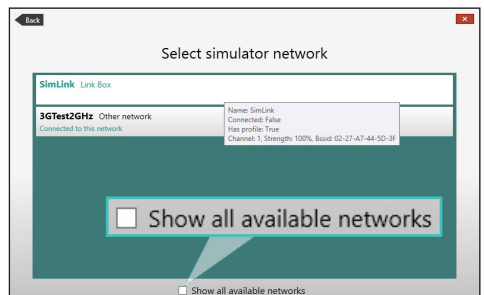


Select 'Connection Settings' from the Menu options.



Use this screen to switch between networks. To connect to a non-simulator network, click 'Show All Available Networks' and select the network from the list.

Patient Monitor is now disconnected from the SimLink network and now connected to your chosen network.









© 2015 Laerdal Medical AS. All rights reserved.

